



Atlas Workholding Air Powered Front Mount B80 Dead Length Collet Chucks

No Draw-tube or Air Feed Tubes Required: for Lathes, Rotary Tables and Grinders: Series ATL210-B80

Uses B80 Collets see page 120

Collet Chuck Order No. with Mount:

ATL210-B80

Straight Recess Mount Type A Mount

ATL210-B80A5

ATL210-B80A6

ATL210-B80A8

Type D Mount

ATL210-B80D5

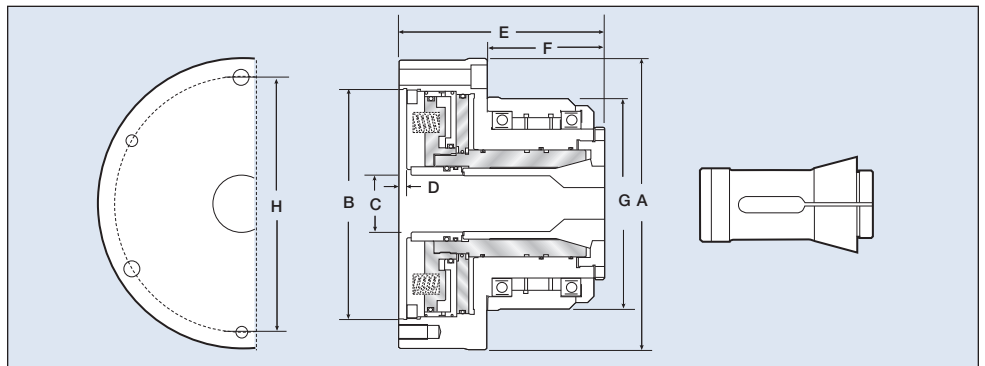
ATL210-B80D6

ATL210-B80D8

Collet Chuck Supplied with:

- 2 Filter Bars
- 2 Air Hoses
- 1 Fixing Bracket for Hoses
- 1 Hex Key
- Mounting Bolts
- Users Manual

- ⊕ No Hydraulic System Required
- ⊕ No Draw Tube or Air Feed Tubes Restricting Spindle Bore
- ⊕ No Rear Cylinders and Cylinder Adapters
- ⊕ Low Cost
- ⊕ Easily Convert any Lathe or Grinder into a Production Machine
- ⊕ Ideal for Rotary Table Applications
- ⊕ Change from Collet Chuck to Standard Chuck Quick and Easy
- ⊕ High Speed 2300 RPM
- ⊕ High Accuracy Less Than .001" TIR
- ⊕ Repeats on Duplicate Parts Plus Minus .0002"
- ⊕ Dead Length Design
- ⊕ For Best Accuracy Use High Quality Crawford Collets
- ⊕ Lever or Foot Pedal Actuated
- ⊕ Low Maintenance with Oil Mist Lubrication System
- ⊕ High Resistance to Coolant and Chip Penetration
- ⊕ Uses B80 Collets, Range 1/16" (1mm) to 3.150" (80mm)
- ⊕ Available in A, D, L, Threaded and Straight Recess Mounting



| Collet Chuck | ATL210-B80 |
|--------------|---------------|
| A | 246mm (9.67") |
| B | 200mm (7.87") |
| C | 80mm (3.15") |
| D | 5mm (0.20") |
| E | 152mm (5.98") |
| F | 80mm (3.15") |
| G | 196mm (7.72") |
| H | 226mm (8.90") |

| Specifications | ATL210-B80 |
|------------------|-------------------------------------|
| Screw Hole Dia | 11mm (0.43") x 6 |
| Collet Type | B80 Collets |
| Max. RPM | 2300 |
| Sleeve Stroke | 4mm (0.16") |
| Air Pressure | 3-8 kg/cm ² (42-114 psi) |
| Through Hole Dia | 80mm (3.15") |
| Grip Force | 19,932 lbs @ 100 PSI |
| Chuck Weight | 32.kg (71.1lbs) |

NOTE: "E" shown is for model ATL210-B80 Collet Chuck with no mounting plate. Add 3/4" to the "E" dimension for mounting plate. This will vary slightly depending on the mounting required. If an exact "E" dimension is required, consult factory.

OPTIONS: Order No: **LEV100** Lever Control Package: (Includes: Lever Control, Line Filter, Lubricator and regulator.
Order No: **FOT200** Foot Pedal Control Package: (Includes: Foot Pedal, Line Filter, Lubricator and regulator.)