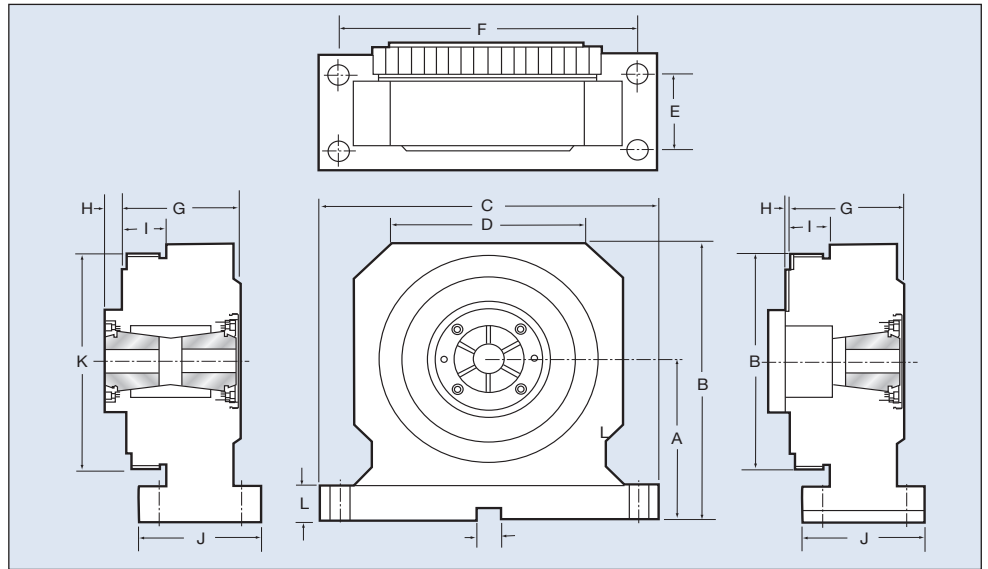


# Atlas Workholding JAM/JHM Spindle Collet Power Chuck

- ⊕ An integration of rotary spindle, power collet chuck and air/hydraulic actuated
- ⊕ Specially designed for double-ended machining: saving setup, loading and machining time
- ⊕ Accelerates the designed and building cycle for a new special purpose machine
- ⊕ Compact size
- ⊕ High clamping force
- ⊕ High rigidity
- ⊕ Drive motor required
- ⊕ 1 Year Warranty



Order No.	JAM-25	JAM-72	JHM65-A
A (mm/in)	135/5.31	145/5.71	135/5.31
B (mm/in)	232/9.13	265/10.45	232/9.13
C (mm/in)	270/10.63	288/11.34	270/10.63
D (mm/in)	210/8.27	240/9.45	210/8.27
E (mm/in)	64/2.52	105/4.13	64/2.52
F (mm/in)	238/9.37	256/10.08	238/9.37
G (mm/in)	88/3.46	105/4.13	88/3.46
(Tapered Sleeve) H (mm/in)	0-5/0-0.20	2.0-7.0/0.08-0.28	-
I (mm/in)	29/1.14	30/1.18	33/1.30
J (mm/in)	98/3.86	135/5.31	98/3.86
K (mm/in)	174/6.85	202/7.95	167/6.57
L (mm/in)	30/1.18	34/1.34	30/1.18
Working Collets	ER-40 (Single Collet)	JR-72 (Single Collet)	JR-65 (Single Collet)
Air/Hydro Actuated	Air	Air	Hydraulic
Operating Pressure	2-8kg-cm <sup>2</sup> /29-114psi	2-8kg-cm <sup>2</sup> /29-114psi	10-25kg-cm <sup>2</sup> /143-350psi
Maximum RPM	2000	1400	1400
Chucking Capacity	4-26/0.16-1.02	25-70/0.98-2.76	25-60/0.98-2.36
Piston Area	138 sq-cm/21.4 sq-in	124 sq-cm/19.2 sq-in	70 sq-cm/10.85 sq-in
Clamping Force	4750kgf@7kg/cm <sup>2</sup> 10450lbf@100psi	5550kgf@7kg/cm <sup>2</sup> 12210lbf@100psi	5250kgf@16kg/cm <sup>2</sup> 11550lbf@229psi
Net Weight	22.5kg/49.5lbs	33.5kg/73.7lbs	23.0kg/50.6lbs