

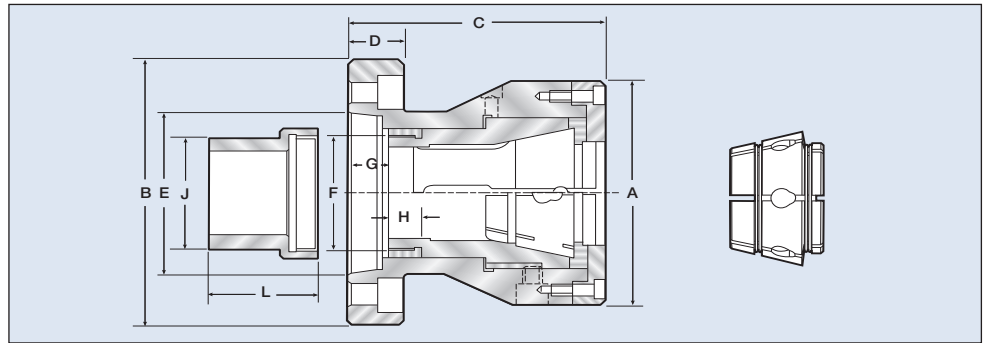


Uses Standard Multibore Collets  
see page 122

# Crawford CDC Standard Length Collet Chucks

## Accept Master Collets or Standard Duty Multibore Collets

- ⌚ Ideal for bar work or for second operation work.
- ⌚ Dead Length Operation
- ⌚ Large Capacity- CDC Chucks maximum round 2.625"
- ⌚ CDC Standard Length Chucks use Heavy-duty Multi-Bore Collets for a powerful parallel grip over a wide diameter range. CDC Standard Chucks can also use Master Collets which accept Hardinge Collet Pads.
- ⌚ Collets are available for Round, Hex or Square parts.
- ⌚ Accurate-.0002" TIR from rear mounting register and working collet taper.
- ⌚ Repeatability .0002" on duplicate parts.
- ⌚ 1 Year Warranty
- ⌚ Available in A type and DIN 55026 mountings



### CDC Series for Multibore Crawford Standard type Collets & Master Collets

Chuck Type	CDC-42	CDC-42	CDC-54	CDC-54	CDC-66	CDC-80
Mount	A2-5	A2-6	A2-6	A2-8	A2-8	A2-8
Maximum RPM	6000	6000	5000	4500	4500	4000
Multibore Collet	W-850	W-850	V-120	V-120	T-285	N-175
Capacity Round (mm/in)	42/1.65	42/1.65	54/2.12	54/2.12	63/2.46	78/3.07
Capacity Hex (mm/in)	42/1.65	42/1.65	54/2.12	54/2.12	63/2.46	78/3.07
Capacity Square (mm/in)	30/1.18	30/1.18	39/1.53	39/1.53	45/1.77	54/2.12
Master Collet	S10	S10	S16	S16	S20	S26
Capacity Round (mm/in)	25/1	25/1	41/1.625	41/1.625	50/2	66/2.625
Capacity Hex (mm/in)	21/0.859	21/0.859	35/1.4	35/1.4	43/1.718	57/2.265
Capacity Square (mm/in)	17/0.703	17/0.703	29/1.07	29/1.07	35/1.406	46/1.843
A (mm/in)	116/4.57	116/4.57	142/5.59	142/5.59	168/6.61	210/8.27
B (mm/in)	135/5.31	170/6.69	170/6.69	220/8.66	220/8.66	220/8.66
C (mm/in)	118.5/4.67	118.5/4.67	146.5/5.77	146.5/5.77	160/6.30	198.5/7.81
D (mm/in)	25/0.98	25/0.98	30/1.18	30/1.18	30/1.18	30/1.18
E (mm/in)	82.575/3.251	106.39/4.188	106.39/4.188	139.735/5.501	139.735/5.501	139.735/5.501
F	M58 x 1.5	M58 x 1.5	M76 x 1.5	M76 x 1.5	M90 x 2.0	M100 x 2.0
G (mm/in)	19/0.75 - 28/1.1	19/0.75 - 29/1.14	24/0.94 - 34/1.39	24/0.94 - 34/1.39	27/1.06 - 37/1.45	46/1.81 - 58/2.28
H (mm/in)	15/0.59	15/0.59	15/0.59	15/0.59	20/0.79	25/0.98
J (mm/in)	65/2.56	65/2.56	83/3.27	83/3.27	96/3.78	106/4.17
L (mm/in)	80/3.15	80/3.15	80/3.15	80/3.15	110/4.33	110/4.33
Drawbar Force (lb/f)	5,390	5,390	8,530	8,530	8,542	9,892
Clamping Force (lb/f)	13,200	13,200	22,100	22,100	22,480	26,077
Aprox. Chuck Weight	28 lbs	28 lbs	39 lbs	39 lbs	49 lbs	75 lbs
Chuck Order No.	J-449	J-434	J-487	J-488	J-489	J-490

Collet Chucks