



Atlas Workholding Air Powered Front Mount B42 Dead Length Collet Chucks

No Draw-tube or Air Feed Tubes Required: for Lathes, Rotary Tables and Grinders: Series ATL207-B42

Uses B42 Collets see page 116-117

Collet Chuck Order No. with Mount:

ATL207-B42

Straight Recess Mount Type A Mount

ATL207-B42A5

ATL207-B42A6

ATL207-B42A8

Type D Mount

ATL207-B42D4

ATL207-B42D5

ATL207-B42D6

ATL207-B42D8

Other Mounts

ATL207-B4244-4°-Taper

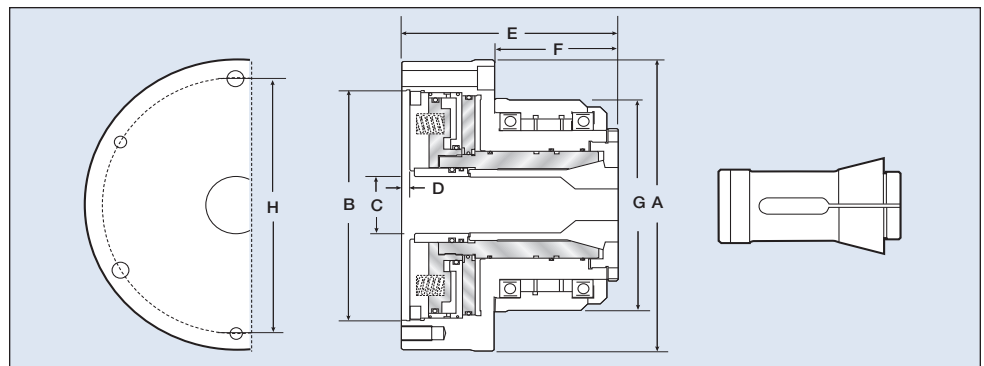
ATL207-B4245-2³/₁₆-10

ATL207-B4246-2³/₈-6

Collet Chuck Supplied with:

- 2 Filter Bars
- 2 Air Hoses
- 1 Fixing Bracket for Hoses
- 1 Hex Key
- Mounting Bolts
- Users Manual

- No Hydraulic System Required
- No Draw Tube or Air Feed Tubes Restricting Spindle Bore
- No Rear Cylinders and Cylinder Adapters
- Low Cost
- Easily Convert any Lathe or Grinder into a Production Machine
- Ideal for Rotary Table Applications
- Change from Collet Chuck to Standard Chuck Quick and Easy
- High Speed 4000 RPM
- High Accuracy Less Than .001" TIR
- Repeats on Duplicate Parts Plus Minus .00015"
- Dead Length Design
- For Best Accuracy Use High Quality Crawford Collets
- Lever or Foot Pedal Actuated
- Low Maintenance with Oil Mist Lubrication System
- High Resistance to Coolant and Chip Penetration
- Uses B42 Collets, Range 1/16" (1mm) to 1-5/8" (42.5mm)
- Available in A, D, L, 4 Degree, Threaded and Straight Recess Mounting



Collet Chuck	ATL207-B42
A	196mm (7.72")
B	155mm (6.10")
C	42mm (1.65")
D	5mm (0.20")
E	136mm (5.35")
F	75mm (2.95")
G	150mm (5.92")
H	172mm (6.77")

Specifications	ATL207-B42
Screw Hole Dia	11mm (0.43")x3 - M10xP1.5x3
Collet Type	B42 Collets
Max. RPM	4000
Sleeve Stroke	4mm (0.16")
Air Pressure	3-8 kg/cm ² (42-114 psi)
Through Hole Dia	42mm (1.65")
Chuck Weight	16kg (35.2lbs)
Grip Force	13,000 lbs @ 100 PSI

NOTE: "E" shown is for model ATL207-B42 Collet Chuck with no mounting plate. Add 3/4" to the "E" dimension for mounting plate. This will vary slightly depending on the mounting required. If an exact "E" dimension is required, consult factory.

OPTIONS: Order No: **LEV100** Lever Control Package: (Includes: Lever Control, Line Filter, Lubricator and regulator.

Order No: **FOT200** Foot Pedal Control Package: (Includes: Foot Pedal, Line Filter, Lubricator and regulator.